



Clepper Manor

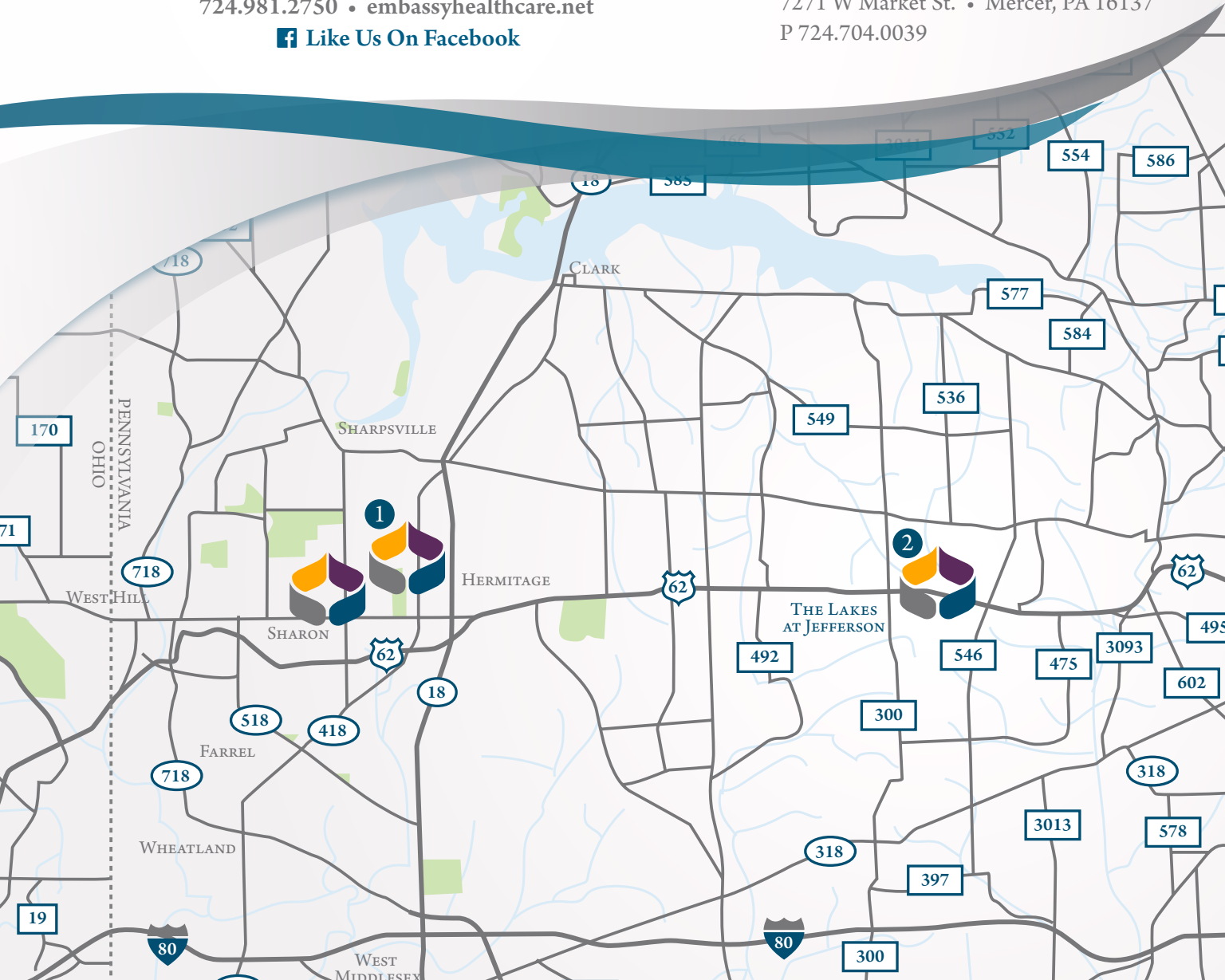
AN EMBASSY HEALTHCARE COMMUNITY

959 East State St. • Sharon, PA 16146
724.981.2750 • embassyhealthcare.net

Like Us On Facebook

Nearby Embassy Locations:

- 1 **Nugent's**
500 Clarksville Rd. • Hermitage, PA 16148
P 724.981.6610
- 2 **The Lakes at Jefferson**
7271 W Market St. • Mercer, PA 16137
P 724.704.0039



Clepper Manor

AN EMBASSY HEALTHCARE COMMUNITY

Diverse care solutions, tailored just for you.

Clepper Manor is small enough to offer personalized attention to each resident and employee, yet large enough to implement the latest care resources, programs and safety protocols. Clepper Manor is a restored 20th-century mansion located just outside downtown Sharon, PA. Our warm, home-like atmosphere boasts beautiful grounds, a secluded courtyard and gazebo, gardens, and a waterfall.

Our goal is to provide you or your loved one with quality comprehensive care to ensure the best clinical outcomes. From the moment you walk through our front door, you'll see our team has prepared for every aspect of your stay. We genuinely care about our residents and each other, and are willing to go above and beyond to provide exceptional care every single day.

Our facility care programs include:

- Round-the-clock nursing care
- Alzheimer's and dementia care
- Daily activities for all residents
- Balance coordination, strength training, and fine gross motor control therapy
- Cognitive skill
- Ancillary services

Our caring staff meets with each resident and learns their preferences in food, activities, schedule and much more, which we then use to build a custom care plan. These individual care initiatives result in a family atmosphere and personalized service for each of our residents.

We partner with our local communities, hospitals and healthcare professionals to collaborate on innovative care programs for our residents.



Our specialized services include:

- Post-stroke acute recovery care
- Diabetes management
- Pain management
- Dialysis, chronic and acute renal diseases
- Outpatient hemodialysis
- Nutrition management
- Psychiatric services
- Podiatry services
- Bi-Pap/C-Pap care

We also are proud to maintain an experienced, professional staff due to our unique culture of care and respect. Employees are proud to say that they are part of our healthcare family, and know that there is a strong support structure in the organization that allows them to confidently do their jobs.

For more information or to schedule a tour, please contact us today.

